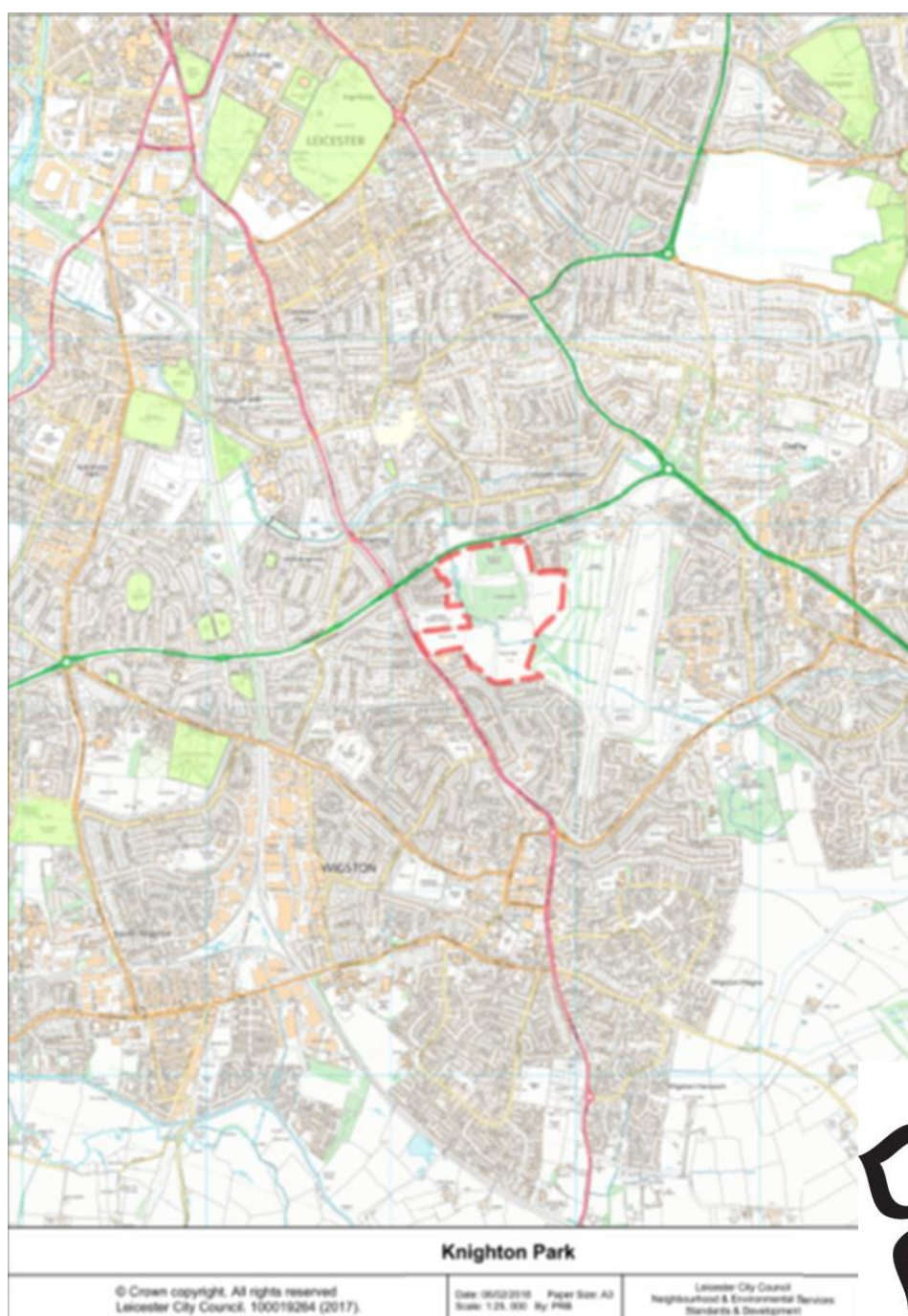


Park Development plan

KNIGHTON PARK

2018-2024



1	Compartment Map.....	2
2	Seats, bins and cycle route	3
3	Introduction.....	4
3.1	Background.....	4
4	Overall Aims for the park	5
5	Location aims	5
5.1	Compartment 1: Car Park	5
5.2	Compartment 2: Parkland landscape	6
5.3	Compartment 3: Parkland landscape	6
5.4	Compartment 4: Knighton Spinney	7
5.5	Compartment 5: Formally planted gardens	7
5.6	Compartment 6: Historic landscape.	7
5.7	Compartment 7: Outdoor Gym	8
5.8	Compartment 8: Central woodland area.	8
5.9	Compartment 9: Specimen Conifer area alongside the stream.....	9
5.10	Compartment 10: Community Sensory gardens.	9
5.11	Compartment 11: Old Pitch and putt course	9
5.12	Compartment 12: Play area 0-8 years and picnic area.	10
5.13	Compartment 13: Play area for older children and tennis courts	10
5.14	Compartment 14: Event field/ flood retention area	10
5.15	Compartment 15: Playing fields	11
5.16	Compartment 16: Depot Yard	11
5.17	Compartment 17: Education sports pitches	11
5.18	Compartment 18:Saffron Brook.....	11
6	Proposals	13

1 Compartment Map

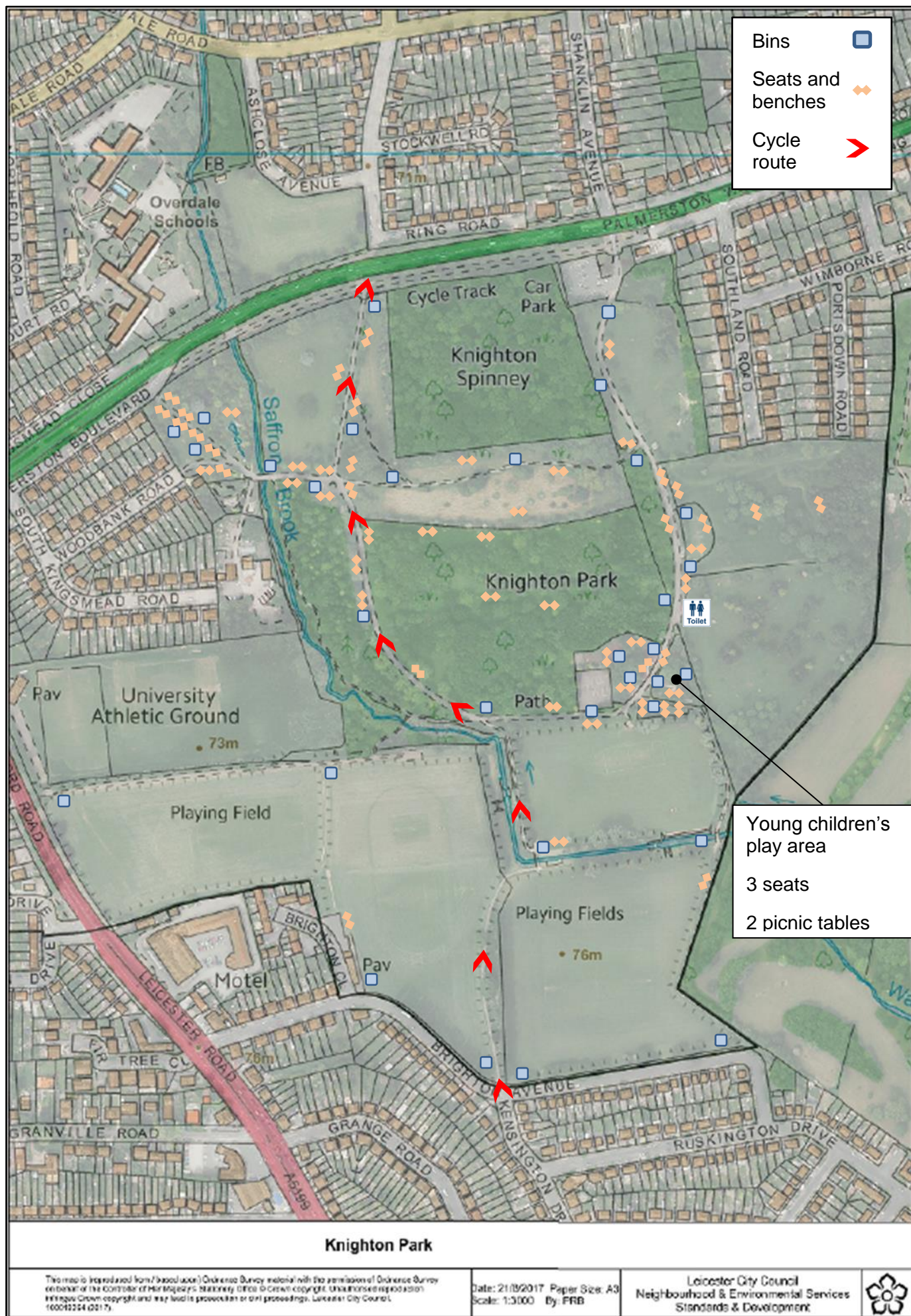
Entrances foot		Accessible woodlands		Car park	
Entrances vehicle		Play, games or sport		Depot	
Main Walks		Event field/ Sports		Brook	
Local nature reserve		Education Sports field		Bridge	
Parkland Landscape		Historic landscape			
		Community Garden			



Knighton Park



2 Seats, bins and cycle route



3 Introduction

This plan is intended to provide a framework around which detailed plans can be developed.

3.1 Background

Name – Knighton Park

UPRN – 0854,

Ownership – Leicester City Council Parks and Green Spaces: Freehold.

Knighton Park Depot

UPRN – 2588

Ownership – Leicester City Council Parks and Green Spaces: Freehold

Name – Knighton Park Pitch and Putt Green (footgolf)

UPRN 085499002

Ownership – Leicester City Council Parks and Green Spaces: Freehold

Name - Name: Knighton Park - Public Convenience

UPRN: 2763

Ownership – Leicester City Council Parks and Green Spaces: Freehold

Name: Welford Road Playing Field & Pavilion

UPRN: 2413

Ownership - Young People and Families Service:

Location

Originally an allotment site, fields and spinney on the south side of the city. The park was created in the mid-1950s as a formal park to serve the then new Knighton area. The spinney predates the park and appears on the 1880 OS map of the area. The Spinney has been designated as a Local Nature Reserve due to its age and wildlife value.

The playing fields on Brighton Avenue were added later, as were the sports fields that are the responsibility of the Young People and Family Service. All of these sports fields and the area used for events are a part of the Knighton Brook flood alleviation scheme, substantial hard landscaping has been undertaken in these areas to retain flood water from the brook.

Description

The park contains mostly formal parks landscapes surrounding the spinney. Shrub and tree planting and some old hedge lines form the main body of the park. At the centre of the park are a group of tree plantations put in in the 1980s. Many of these areas are becoming overgrown and in need of maintenance. The play areas are on the South Eastern side of the main formal park and includes a separate toddler and young children's area, teenage area, ball court and tennis court.

Size 36.74ha

The park has 2 vehicle entrances, one from South Kingsmead Road into the depot exclusively used by LCC Grounds maintenance staff. The public access is off Palmerston Way which leads into a small public car park. There is also a small car park associated with changing rooms pavilion on Brighton Close, used by Schools and various sports teams.

A cycle route leads through the park connecting Brighton Avenue and Palmerston Way and connecting with to Carisbrooke Road and then on towards the city centre.

Seven pedestrian entrances give access onto the park, one at Woodbank Road leading onto the formal gardens, 3 from Palmerston Way one of which is associated with car park entrance, 2 from Brighton Avenue and one from Leicester Road. With the exception of the eastern access from Brighton Avenue all the formal entrances lead onto tarmac paths giving

good access around the park. The boundaries on the northern side have hedges and fences or back onto private property. On the southern side along Brighton Avenue there are no barriers to pedestrian access directly from the road.

These entrances give access to a well-planned path network within the park.

Knighton Park is a formal traditional park with a variety of Horticultural features, trees and facilities for formal and casual sports.

As noted above, the spinney is designated as a Local Nature Reserve. The Knighton Brook runs through the park and makes an attractive feature although the hard works associated with the flood scheme make that area less attractive.

The park is popular and well used by local people and can become very busy. It is used extensively by dog walkers throughout the week. While there are some incidents associated with the high density of dogs within the park. There is no excessive problem with vandalism within the park. The football fields are also well used on a formal and casual basis. The pitch and putt course was closed in 2015 due to lack of interest and replaced with a foot golf course, unfortunately this has not proved popular.

The park has good connections; the cycle route connects the park to Wigston and the city centre. Foot access is good.

The stream gives good wildlife connections to the wider landscape, this is assisted by the presence of the golf course and race course adjacent to the park.

Designations and restrictions

Local Nature Reserve

Saffron Brook designated Main River

Flood Zone

Known ASB issues

The park occasionally suffers with small scale anti-social behaviour, which mainly consists of graffiti and damage to the public toilets in the centre of the park.

Due to the large numbers of dog walkers that visit the park, there has been occasional conflict with dogs and their owners.

Use of the sports field for BBQs and large gatherings

4 Overall Aims for the park

These aims provide a framework for the development of the park in the long term.

- 1) Create a variety of traditional parkland type settings for public enjoyment.
- 2) Encourage all ages to take part in healthy outdoor activities.
- 3) Increase biodiversity.
- 4) To educate the public about landscape, history and horticulture
- 5) Provide opportunities for formal and informal sports.
- 6) Ensure any new features are maintainable within current resources.

5 Location aims

These location aims provide a framework for each location from which the developments within the park can be planned to give a cohesive, planned approach across the park in the long term.

5.1 Compartment 1: Car Park

Capacity: 58 car parking spaces with 3 disabled spaces

An access from Palmerston Way leads onto the main entrance and a tarmac car park. A grass overflow to the east is fenced from the main field by a metal rail barrier and is only opened when ground conditions allow. There is a known problem with the car park becoming full and parking spilling out onto the adjacent road. There is no charge for use of the car park.

Aims:

- 1) Provide suitable and sufficient parking.

Objectives:

- a. Assess parking requirements and review provision.
- b. Consider extending the area into Compartment 2 or reorganising the existing space to accommodate more cars.

5.2 Compartment 2: Parkland landscape

The main entrance from the public car park opens onto a long parkland vista bordered by Knighton Spinney to the east and large shrubs to the rear of housing to the West. Semi mature and mature trees many of which were a part of the original planting scheme enhance the view. A wide tarmac path runs along the eastern side connecting it with the rest of the park.

Aims:

- 1) Provide an appealing balanced vista from the entrance and car park.
- 2) Retain and enhance the parkland view.
- 3) Maintain the tree and shrub buffer with the houses on Southland Road

Objectives:

- a. Assess parking requirements and review provision.
- b. Maintain but do not increase current tree cover.
- c. Maintain the shrub barrier between the houses and park to maintain a buffer for local residents.
- d. Maintain the area as amenity grassland with spaced trees.

5.3 Compartment 3: Parkland landscape

This area wraps around the north, western and eastern side of Knighton Spinney Local Nature Reserve. The spinney boundary is marked by a fence and a barrier of exotic and native shrubs on the southern and western sides restricting access from the main park. To the south is a long hedge, with Saffron Brook to the west. The open grass land between is dotted mature and semi mature trees. This is the main setting for memorial trees and tree avenues.

Aims:

- 1) Maintain and enhance the parkland views.
- 2) Enhance the tree and shrub planting.
- 3) Create and maintain tree avenues.
- 4) Maintain the shrub barrier to protect Knighton Spinney from excessive disturbance.
- 5) Improve the wildlife value of the spinney boundary.
- 6) Maintain Saffron Brook to maximise its visibility and value in the park.
- 7) Improve views onto the park from Palmerston Way

Objectives:

- a. Control the number of memorial trees in the area.
- b. Review the tree avenues on the area and enhance as required.
- c. Create new tree avenues where appropriate.
- d. Ensure views onto the woodland ride.
- e. Create bee and butterfly border along woodland boundary.
- f. Maintain safe access points to the brook.
- g. Open views onto the brook from the bridge
- h. Cut hedge and crown lift trees.

- i. Investigate the potential for additional drainage to improve access across the area.

5.4 Compartment 4: Knighton Spinney

Designated as a Local Nature Reserve, the spinney predates the park by a considerable margin and appears on the 1888 OS map in more or less its current form. The spinney is closed to casual visitors except when manned by volunteers who use a small hut at the entry. The Forest Schools scheme also uses a small clearing near to the entrance.

The City Wildlife Project produced a general management plan which has now expired. Trees and woodlands also produced a small management plan in 2013 which expired in 2018.

Aims

- 1) Maintain and enhance the wildlife value of the spinney.
- 2) Provide suitable activities within the woodland.
- 3) Enhance visitor facilities within the spinney.
- 4) Maintain the quiet nature of the spinney.
- 5) Define pathways and create wildlife havens within the woodland.
- 6) Ensure continuation of the woodland by encouraging age and native species diversity.

Objectives

- a. Create a separate management plan for the spinney.
- b. Discourage casual public access.
- c. Improve the facilities for the volunteers.
- d. Improve the Forest Schools area.
- e. Review and improve path network within the woodland.
- f. Create a woodland walks.
- g. Investigate other suitable activities.
- h. Improve facilities for the volunteer workers.
- i. Where possible encourage self-set seedlings oak, holly yew or other suitable species within the woodland
- j. Plant new trees where appropriate.
- k. undertake coppicing at selected locations

5.5 Compartment 5: Formally planted gardens

This area is laid out with flower, herbaceous and shrub beds with a range of specimen exotic trees including an avenue of Ginko trees. The Heath Garden and associated ponds are in the south eastern corner of the compartment. A water feature runs through the centre of the Heath Garden

Aims

- 1) Retain the formal and planted nature of the compartment.
- 2) Refurbish the water feature
- 3) Restore the Heath Garden
- 4) Maintain good access around the gardens

Objectives

- a. Clear and refurbish the water feature creating new channels.
- b. Clear and replant selected areas within the Heath Garden.
- c. Maintain the pond as a high quality semi natural feature
- d. Renew or install new path surfaces where required.

5.6 Compartment 6: Historic landscape.

The open aspect with individual feature trees and a small conifer copse on the boundary. Relaxed mowing of the grass on this area further gives the impression of a more agricultural use of the land giving further variety to the parkland landscapes within the park.

Aims

- 1) Create an example of wood pasture landscape
- 2) Maintain a grass sward on the area with well-spaced specimen trees.
- 3) Increase the biodiversity of the grassland with appropriate grass land species
- 4) Educate users about the historical uses of the land.

Objectives

- a. Maintain the grass sward with minimal cutting needed to prevent encroachment of shrubs and trees.
- b. Plant or seed flowering plants into the grass sward.
- c. Maintain the tree crowns at above 2m above ground level to give uninterrupted views across the field.
- d. Install interpretation of agricultural techniques and the landscapes they created.

5.7 Compartment 7: Outdoor Gym

Accessed from the main pathway via two entrances, this enclosed area contains 14 pieces of outdoor gym equipment. The area is screened by a small fence and a new planted hedge, and has an open view to the front with a grass bank.

Aims

- 1) Encourage the use of the equipment
- 2) Make the area user friendly
- 3) Create a barrier between the field and the gym area

Objectives

- a. Open views onto the area from the path
- b. Create a hedge barrier between the Gym and the heritage field to the rear.

5.8 Compartment 8: Central woodland area.

This woodland covers around 20% of the total park area and was heavily planted during the late 1980s or early 1990s. The plantations were originally themed to individual tree species and bisected by 2 woodland rides, north south and east west. The rides cross in the centre of the area. Along the southern side is relic ridge and furrow along. A hedgerow isolates the area from the park on its northern and eastern sides.

Aims

- 1) Create public woodland including rides, glades and woodland walks.
- 2) Improve views into and across the plantation area.
- 3) Allow easy access to encourage use by the public
- 4) Improve the wildlife value of the area.

Objectives

- a. Produce a management plan for the area that will create a mix of dense woodland areas to encourage wildlife and open areas with good visibility and clear routes to encourage visitors. To include:-
 - Dense under planting of selected areas with shrubs, trees and woodland herbs.
 - Removal of 30% of high canopy trees from the tree plantations to allow free movement and underplanting.
 - Open views into the woodland from the surrounding paths.
 - Remove obstructions to create open and inviting aspects onto the tree avenues from the surrounding pathways.
 - Open woodland walks from the main pathway.
 - A landscape feature where the woodland rides cross.
 - Interpretation.

5.9 Compartment 9: Specimen Conifer area alongside the stream.

This is a heavily wooded section alongside the Saffron Brook mostly planted in the late 1980s or early 1990s. As a conifer woodland and has wide variety of specimen conifer trees. A woodland walk leads alongside the brook coming out at main footway west of the roundabout.

Aims

- 1) Maintain the specimen conifer woodland.
- 2) Provide woodland walks alongside the brook.
- 3) Highlight the brook.
- 4) Ensure safety
- 5) Make an inviting entrance to the park at the bridge.
- 6) Encourage wildlife.

Objectives

- a. Improve the woodland walk.
- b. Improve the environs surrounding the bridge
- c. Cut back undergrowth, shrubs and trees to: create views onto the stream, highlight the specimen conifers and improve sight lines.
- d. Open views onto the brook from the woodland walk.
- e. Secure the banks to the stream.
- f. Create safe access points onto the stream.

5.10 Compartment 10: Community Sensory gardens.

The Knighton Park Gardening Club manages this area as a Sensory garden. The area has a number of garden features and is a high quality formal space available for use by the public.

Aims

- 1) Encourage continued community involvement in the park.
- 2) Develop volunteer skills.
- 3) Create an interesting space.

Objectives

- a. Work with the Gardening Club to maintain and improve the space.
- b. Develop the horticultural skills and understanding of the Gardening Club members.
- c. Make a space sensory that can be enjoyed by all
- d. Restrict entry to reduce vandalism and damage.

5.11 Compartment 11: Old Pitch and putt course

This area was previously used as pay and play pitch and putt course. It is bounded by hedges and on all sides, the latest of these was planted by volunteers in 2012 and split the area from Compartment 6.

The pitch and putt was closed in September 2015 and a 'Foot Golf' course installed in April 2016. The area is split into sections by groups of trees. Overall the area is isolated from the rest of the park and underused.

A toilet block sits at the entrance adjacent to the main path obscuring views onto the area.

Aims

- 1) To increase usage of the area
- 2) Encourage fitness activities on the area.
- 3) Remove barriers that isolate the area.
- 4) Open views onto and within the area.
- 5) Improve machine/ Vehicle access.

Objectives

- a. Open up new entries from path on eastern side

- b. Create additional views onto the area to invite people onto the area and enhance the feeling of Safety
- c. Enhance the facilities to encourage use for active sport and exercise in addition to the foot golf already provided.
- d. Improve views from the play area by reducing the hedge and rose banks.
- e. Open up views onto the area from the main pathway alongside the outdoor gym and the play area.
- f. Create a machine access onto area 14 as an alternative to using the path between the play area and picnic area.
- g. Identify appropriate activities and for the area with consideration of its proximity to the Outdoor Gym, foot golf, play areas and heavy use by dog owners.

5.12 Compartment 12: Play area 0-8 years and picnic area.

A fenced area on the eastern side of the main path aimed at younger children the play areas is well used although somewhat overshadowed by trees and a hedgerow between it and areas 11 and 14.

Aims

- 1) Provide play opportunities for 0-8 year old children.
- 2) Open views to surrounding areas.
- 3) Provide seating for carers.

Objectives

- a. Lower hedge to allow views and more light onto the area
- b. Maintain the facilities for younger children.
- c. Investigate the potential for integrating the current picnic area into the play area.

5.13 Compartment 13: Play area for older children and tennis courts

This is on the western side of the path aimed at older children. The area has equipment suitable for children 8 years plus bounded by woodland to the rear. To the west of the play area is a pair of tennis courts. The area is bordered by the main pathway to the south and east and tree plantations to the rear. To the west there are the remains medieval ridge and furrow.

Aims

- 1) Provide play opportunities for children 8 years plus
- 2) Provide tennis courts.

Objectives

- a. Maintain the play area and tennis facilities.

5.14 Compartment 14: Event field/ flood retention area

This is a large basin designed to hold flood water currently used as an events field and area for informal sports. A bank separates the field from the main park pathway. Paths lead to bridges in the east and west corners of the field. The grass is maintained as amenity grassland. The surrounding banks have substantial tree cover in places. Schemes to naturalise the watercourse have been considered by the Environment Agency although these have no approval at the moment.

Aims

- 1) Work with Environment Agency to maintain as a flood basin
- 2) Maintain good access.

Objectives

- a. Maintain the paths and bridges to ensure good access for events and other activities.
- b. Create access to Compartment 11.
- c. Maintain as amenity grass
- d. Ensure good visibility.

- e. Increase connectivity with compartment 11

5.15 Compartment 15: Playing fields

A formal and informal sports field, surrounded by trees with the Saffron brook forming the northern boundary. The main access is from Brighton Avenue to the south and is adjacent to Compartment 17 owned by the Children, Young People and Families Service. The area is marked out with 2 football pitches. Two bridges over Saffron Brook link the area with the events area and main body of the park. The flood structures along the stream and surrounding the sports areas are the responsibility of the Environment Agency.

The access along the roadside from Brighton Avenue needs to be secured as vehicles are gaining unauthorised access to the field for parties and BBQ sessions.

Aims

- 1) Maintain area for formal and informal sports.
- 2) Ensure good access and connections with the main body of the park.
- 3) Secure the park boundary.

Objectives

- a. Maintain as amenity sports grass.
- b. Maintain trees, especially along Brighton Avenue.
- c. Secure the boundary using large boulders and provide an access barrier for authorised and maintenance vehicles.

5.16 Compartment 16: Depot Yard

The parks depot; development as operational requirements dictate.

5.17 Compartment 17: Education sports pitches

These Sports pitches are under the control of the Education and Children's Services Section, and are managed and administered by Sport on Parks. They connect with Brighton Avenue to the south and the main Leicester Road to the west, where there is a privately owned sports ground and pavilion. A pavilion and car park off Brighton Close overlooks the area.

On the Eastern side a cycle route connects Brighton Avenue with Route 4 to Oadby, Wigston and Blaby and the town centre via Carrisbrooke Rd.

The sports pitches are maintained by Parks Services.

5.18 Compartment 18: Saffron Brook

This brook is designated as Main River by the Environment Agency. The sports field and events area are a part of a flood scheme for the brook with substantial associated hard works bordering the events field and football fields. The flood risk here is designated as High(3.3%).

The remainder of the brook is left to naturalise. There are 3 bridges over the brook connecting the north and southern sections of the park. Two that connect areas 14 and 15 one of these being a part of the cycle route and across the naturalised section on Compartment 8. Erosion is occurring on the naturalised section especially alongside Compartment 10.

Aims

- 1) Maintain and improve the wildlife value of the brook.
- 2) Address erosion issues appropriately.
- 3) Improve views onto and along the brook.
- 4) Maintain and improve safe access to the brook.
- 5) Minimise hazards associated with the brook

Objectives

- a. Reduce disturbance from people and animals to high value habitat areas along the brook.
- b. Work with the Environment Agency to address areas where erosion is becoming a problem. For example undermining structures.

- c. Cut back vegetation obscuring views of the brook from selected viewpoints such as paths and bridges.
- d. Make safe hazardous approaches to the brook and discourage access.
- e. Encourage access at appropriate points along the brook.

6 Proposals

Proposals for action for each section arising from the aims stated above. Some of these are considered long term visions and completion will depend on the budgets being available.

P= Parks funding. Ex = External funding to be sought. 106 = Potential 106 project.
NA = Not applicable V= Potential Volunteer project

Compartment	Item	Item	Completion Target	Comment	Priority	Resource
All park	0.1	Review memorial seats and plan locations for future contributions	2018/19	This will need to be considered across the park.	H	P
All Park	0.2	Review area to identify potential locations for further tree avenues.	2018/19	Work with trees and woodlands.	M	P
All Park	.03	Review locations of bins, seats and picnic benches.	2018/19	Currently there is only one picnic area on the park near to the play area. Provision of facilities elsewhere on the park needs to be considered.	S/M	P
Compartment 1: Car Park						
1	1.1	Assess and review parking provision. Assess peak times.	2018	From assessment review parking provision and if required plan extension into section 2.	M	P
1	1.2	Design car park extension once assessment has been completed.	2019/20	Design car park layout based on requirement assessment.	M	P
1	1.3	Install any changes as identified above	2020/2021	Any overflow car park will need to have the grass surface reinforced. Budget cost £30 per m2 plus fencing.	M	106
Compartment 2: Parkland landscape						
2	2.1	Maintain as existing. Replace trees and shrubs as required.	On going	This area is attractive and makes a good introduction to the park.	L	P
2	2.2	Maintain the shrub/ tree buffer between the houses and the park	On going		H	P
Compartment 3: Parkland landscape						
3	3.1	Plan Memorial tree locations and assess the maximum capacity of the area and appropriate species.	2018/19	There are a large number of Memorial trees on this area. The position, species need to be considered to prevent overcrowding and losing the open aspects of these spaces.	H	P
3	3.2	Identify tree species to replace the	2018/19	Work with Trees and	H	P

Compartment	Item	Item	Completion Target	Comment	Priority	Resource
		failing Laburnum Tree Avenue		Woodlands to identify appropriate species		
3	2.3	Remove Laburnum Tree Avenue and replant as identified above	2019/20		M	106
3	3.4	Identify and remove trees in poor condition overshadowing the tree avenue to let more light into the area.	2018/19	Discuss with tree and woodlands removing adjacent large poor condition trees shading the area.	H	106
3	3.5	Remove lower branches of the two trees obscuring the view of woodland ride (T470 and T508)	2018/19	This will need to be done on site under supervision to ensure desired views are obtained	H	P
3	3.6	Relocate seat obscuring view of Woodland Ride.	2018/19		H	P
3	3.7	Open up windows through the hedge into the tree plantation (compartment 8).	2019/21	Each opening will need to be assessed on site on an individual basis.	M	106
3	3.8	Place bee posts in appropriate locations within the formal border southern boundary to the spinney.	2018/21	These posts are stored in the depot	M	P/ 106
3	3.9	Design complementary planting in the formal southern boundary with The Spinney to encourage invertebrates.	2018	Care must be taken to avoid species that are likely to invade the local nature reserve.	M	P
3	3.10	Plant or seed boundary as identified above.	2019/20	As above	M	106
3	3.11	Assess fence boundary between park and spinney	2019	Assess condition and make recommendations.	M	P
3	3.12	Instigate a programme of repairs to boundary fence	2020/21	As identified in 3.11	M/ L	P
3	3.13	Maintain a clear area to give a safe access to the Saffron Brook from the main field.	On going	Other areas where the brook banks are steep will be unmaintained to create and reinforce vegetative barriers to discourage access at dangerous points.	S	P

Compartment	Item	Item	Completion Target	Comment	Priority	Resource
3	3.14	Maintain the hedge line between the park and Palmerston Way.	On going	Note the large shrubs on Palmerston Way and trees in the park prevent views from the main carriageway. The low hedge will improve views from cycle route 4 and footway.	S	P
3	3.15	Consider crown lifting trees on the Palmerston Way boundary to improve views	2020	Trees and woodlands section to be consulted.	M	P/106
3	3.16	Survey area with a view to installing field drainage	2019/20	The area between Compartments 4 and 8 can be excessively wet preventing its use during poor weather.		
Compartment 4: Knighton Spinney						
4	4.1	Review the facilities for volunteers on site.	2019	The current volunteer hut may need to be relocated, refurbished or replaced. Note Other volunteer facilities are available a short distance away in the Community Garden (Compartment 10). Potential damage or enhancement to the ecology of the spinney will need to be minimised.	M	P
4	4.2	Identify Improvements to interpretation with bespoke boards and activities such as rubbing posts, bark rubbing stations. Species lists and other relevant material to be identified.	2019	The volunteers must be involved in the design and placement of the improvements. Installations must meet corporate design standards.	M	P
4	4.3	Design, commission and install interpretation	2020	Professional design will be required. Themes to be agreed.		106
4	4.4	Review path network within the woodland.	2018/19	This network should give good viewing points without disturbing the ecology and wildlife of the woodland.	L	P

Compartment	Item	Item	Completion Target	Comment	Priority	Resource
4	4.5	Refurbish paths following review.	2019/2020	These are constructed of wood chippings with wooden edges. Potential Volunteer project.	L	V
4	4.6	Refurbish the Woodland Schools glade.	2020	The current wooden facilities are in poor condition and its location.	M	V
4.5 Compartment 5: Formally planted gardens						
5	5.1	Review the design of the current water feature and produce a development plan.	2018	Options Fill in and create a rill through the centre. Refurbish back to original condition. Abandon the water feature and concentrate on the pond.		P
5	5.2	Carry out works to water feature	2021	Work as funding becomes available		106
5	5.3	Identify replanting needed.	On going		M	P
5	5.4	Review surfacing of current grass paths where they are worn out, wet or otherwise unsuitable for use.	2018/2022	Options bark/ wood chip Breedon gravel or similar stone surface.	S - L	V/ P
Compartment 6: Historic landscape.						
6	5.4	Investigate ways of increasing the wild flowers within the sward.	2018/19	This could be seeding, plug planting or a mix of both.	L	P
6	6.1	Carry out work identified above.	2019/2020	This will improve the visual appeal of the area	L	P/ 106
6	6.2	Maintain trees to create a minimum clear 2m above ground level	On going	This will allow for mowing and create a wood pasture effect.	M	P
6	6.3	Install interpretation	2022	As funds become available	M	106 /P
Compartment 7: Outdoor Gym						
7	7.1	Maintain as existing	On going		H	P
7	7.2	Identify an area suitable for Calisthenics unit near to this area.	2018	This may be on Compartment 11 or immediately adjacent in compartment 6	M	P

Compartment	Item	Item	Completion Target	Comment	Priority	Resource
7	7.3	Remove old rose bed to improve views into the Gym area from the main pathway and compartment 6 & 11.	Part complete	This will open up views making the gym feel safer and more appealing to users.	H	P
Compartment 8: central woodland area.						
8	8.1	Draw up management plan identifying areas within the tree plantations suitable for development as: Public access Wildlife reserves Woodland walks	2019/20	The aim of this is to create a planned patchwork of habitats and accesses to add interest and accessibility to the central section of the park.	M	P
8	8.2	Install a landscape feature where the two woodland rides cross.	2020/21	The exact nature is to be established. Installation as funds become available.	L	Ex/106
8	8.3	Improve the visibility of the east/west Woodland ride from eastern end Remove 15m of old hedge line, remove trees obscuring views of the ride. Remove small section of hedge line on the northern side of entrance to meet with the first tree.	2018/19	This should give an attractive view along the whole length of the East West Ride and encourage its use.	S/M	P
8	8.4	Remove 30% of trees from the tree plantations and create the areas as identified above	2019-2023	Potential for Volunteer involvement.	M	106
8	8.5	Under plant areas identified as wildlife areas with understory trees and shrubs to encourage wildlife	2019-2023	Consultation with Trees and woodlands and wildlife conservation is required	M	106
8	8.6	Identify appropriate interpretation subjects.	2019		M	P
8	8.7	Install interpretation	2020/21	Installation as funds becomes available.	L	106/Ex
Compartment 9: Specimen Conifer area alongside the stream.						
9	9.1	Identify specimen trees. Identify shrubs and trees to be removed, trimmed or crown lifted and produce an outline plan	2018/20	This need to be plotted on a map to ensure a planned development of the area.		
9	9.2	Remove shrubs, trim, crown lift conifers.	2020/24	To improve views of the stream and highlight specimen conifers. Rolling programme through the area.	M	P

Compartment	Item	Item	Completion Target	Comment	Priority	Resource
9	9.3	Remove selected trees and shrubs to improve views of specimen conifers	2020/24	Work with Trees and woodlands and wildlife conservation is required	M/L	P/Ex
9	9.4	Identify and Create safe access points to the brook.	2019	Work with the Environment Agency	S/M	V/106
Compartment 10: Community gardens.						
10	10.1	Work with the gardening group to improve and develop the area.	On going	This garden is open to the public on an occasional basis	S	P/V
Compartment 11: Old Pitch and putt course						
11	11.1	Install an entrance to connect with compartment 14 near to the bridge to replace existing desire line.	2018	Recommended: the ditch be piped and backfilled with stone to make a wide entrance.	S	106
11	11.2	Remove old rose bed to improve views onto the area.	On going	This is ongoing and will open up views onto both the outdoor gym (compartment 7) and Compartment 11	P	P
11	11.3	Identify potential location of calisthenics unit to complement outdoor gym	2018	Installation will take place as funds become available	S	106
11	11.4	Identify other appropriate casual sports or other casual activities suitable for the area.	2018/19	Conduct consultation to establish potential requirements.	S/M	P
11	11.5	Establish outline designs and budget prices for the proposals above	2019/20	Installations to be carried out as budgets become available.	M	106
11	11.6	Open up the current entrance to the connecting pathway and bridge on the eastern side of area 14.	2019/20	This would create a machine access avoiding the picnic and play area. The area may need to be reinforced to accommodate vehicle traffic.	P	P
11	11.7	Formalise pathways and desire lines entering the area from Compartment 6 to the north	2018/19	The narrow accesses through the breaks in the hedge may need the ground reinforcing if traffic increases.		
Compartment 12: Play area 0-8 years and picnic area.						
12	12.1	Investigate integrating the play area and picnic area.	2018	This would leave the park without a general use picnic area available to all.		
12	12.2	Maintain and review the facilities in	On			P&

Compartment	Item	Item	Completion Target	Comment	Priority	Resource
		the play area	Going			Y
12	12.3	Investigate wet area on south eastern corner of play area and identify potential solutions.	2018/19	This area is a long standing problem. Resolving this will allow the play area to be extended.	H	P
12	12.4	Install drainage to reduce the wet area identified above	2020/24	Work to be undertaken as funds become available	M	Ex/106
12	12.5	Lay hedge and crown lift trees on boundary with Compartment 11	2019/23	This will improve views and let light into the area	M	P
12	12.6	Investigate feasibility of opening up an entrance onto compartment 11.	2019	To improve connections to the play area	M	P
Compartment 13: Play area, older children						
13	13.1	Maintain and improve the facilities for older children.	On going			P&Y
Compartment 14: Event field						
14	14.1	Upgrade stone path on boundary with Compartment 11 to a tarmac surface.	2019/24	This path is in poor condition to be completed as funds become available.	M	Ex/106
14	14.2	Pipe ditch and create access onto compartment 11.	2019/24	Use existing desire line. At the southern end of the ditch	S	106
14	14.3	Investigate feasibility of new machine access from compartment 11 at northern end of the ditch.	2018/19	Incorporate into new crossing or utilise an existing old gate way that could be opened up.	S	106
Compartment 15: Sports Field						
15	15.1	Secure boundary along Brighton Avenue using minimum of 1 ton boulders at 1.4m spacing and a machine access barrier	2019/22	This boundary requires securing due to unauthorised access by vehicles and potential Traveller incursion.	H	
Compartment 18: Saffron Brook						
		General				
18	18.1	Plan for future erosion and identify areas of concern.	2018-19	Working with the Environment Agency and other interested parties.	M L	P
18	18.2	Work with Environment Agency to resolve identified erosion problems	2018-2024	Individual schemes need to be developed to resolve these issues.	H	EX 106
		Alongside Compartment 9:				

Compartment	Item	Item	Completion Target	Comment	Priority	Resource
18	18.3	Bridge near boundary with Golf course. Retain the bridge approach and bank.	2019	Currently retained by a temporary repair. The pathway is falling away from the bridge at the sides.	M	
18	18.4	Resurface and retain the bridge approach and bank.	2020	The pathway is falling away from the bridge at the sides of the bridge approach. The bank is also eroding.	M	
18	18.5	Identify viewing points onto the brook.	2018	Care must be taken not to open views encouraging visitors into hazardous situations or high value wildlife areas.		
18	18.6	Remove shrubs to give views identified above.	2019/ 2021		S L	V
18	18.7	Identify areas suitable for access to the brook edge.	2018	Shrub and other growth should be encouraged in other areas to discourage access.	S	P
18	18.8	Redesign access points to remove hazards and encourage safe use.	2019/ 2023	Carry out works as funds or resources become available.	M L	V
		Alongside Compartment 10				
18	18.8	Work with the Environment Agency to address substantial erosion to the rear of the Community Garden fence	2018/ 19	The erosion is threatening the security fence and possibly the building in the longer term.		
		Bridge between Compartments 5 and 3.				
18	18.10	Fence bridge approach	2018/ 19	To discourage access to steep slope.	S	P/ EX
18	18.11	Open up views from the bridge onto the brook	2018/ 20		S	P/ V
		Alongside Compartment 3:				
18	18.12	Make safe and improve access onto brook edge	2019/ 21	This is a well-used area and play space.	M	P/ V
18	18.13	Encourage shrub and tall herb growth where banks are steep and unsuitable for access.	On Going	Leave areas unmanaged.	S	P